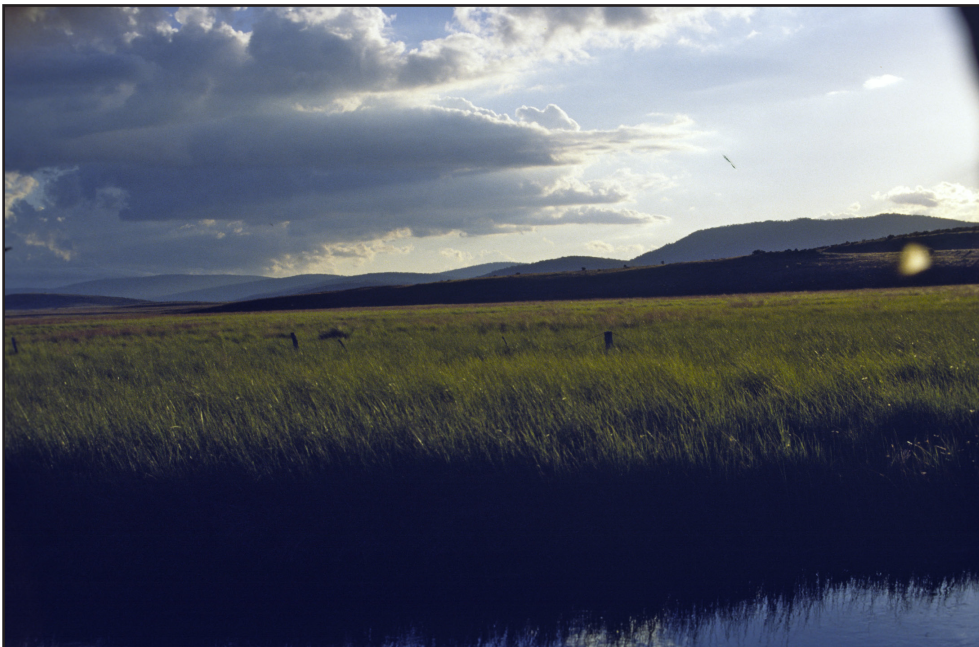




1

***Photos of the swamp from about thirty years ago. The fence line in Photos 2 and 3 gives an idea of the height of the vegetation, the base of which sat in about a foot of water. The foreground of Photos 2 and 3 demonstrates the presence of a clean, significant, well-defined stream***



2



3



***Walking north along  
Currango Creek, from  
about 1km above the  
Causeway  
(1)***



4



5



6



***Walking north along  
Currango Creek, from  
about 1km above the  
Causeway  
(2)***



7



8



***Walking south from  
the Confluence of  
Currango Creek  
and Gurrangorambla  
Creek***



9



10



11



***Aerial View of Currango Creek Entry to the Lake***  
(from Google Maps)

